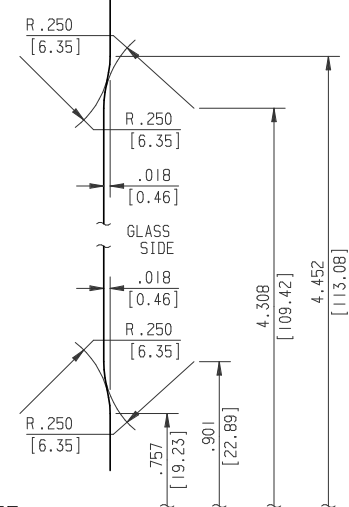
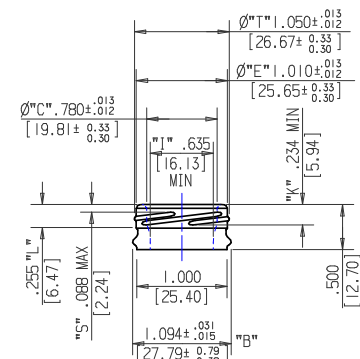
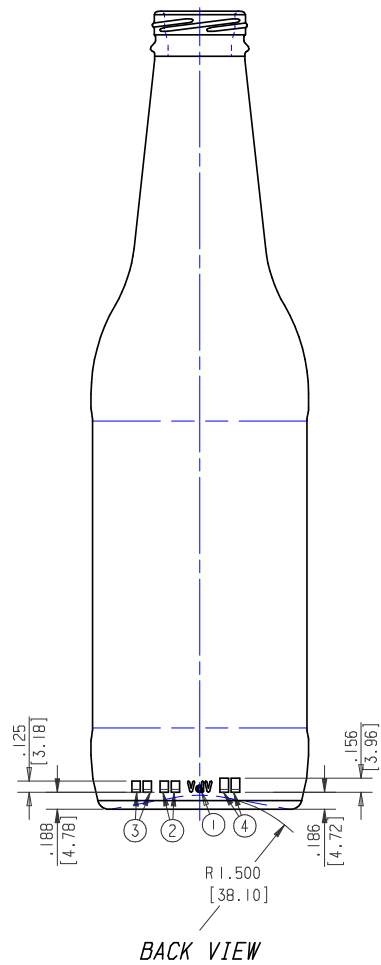
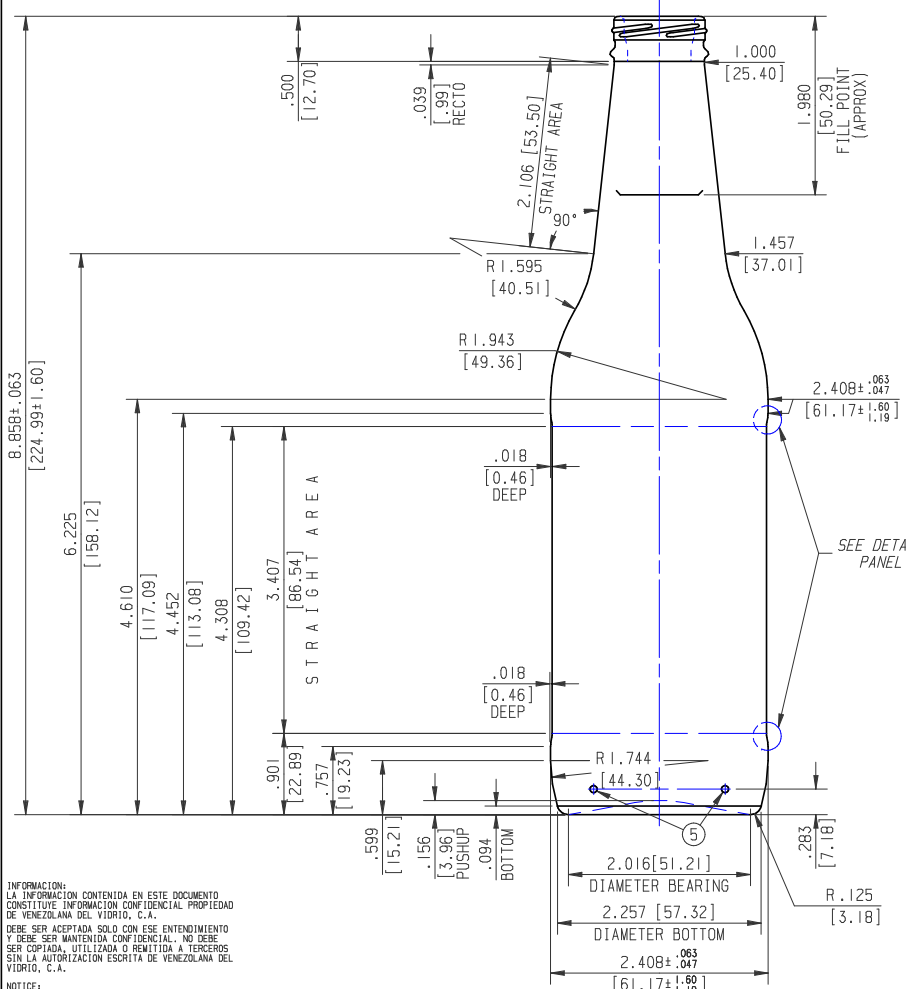


FINISH 026-0540-R002

NOTAS-NOTES

- LOGO DE PLANTA N:3, ALT. .125" [3.18]
TRADEMARK N:3.125" [3.18] HT.
- FECHA ANUAL ALT. .125" [3.18]
YEAR DATE .125" [3.18] HT.
- SERIAL DE PLANTA "LG/VL" ALT. .125" [3.18]
PLANTA SERIAL "VL" .125" [3.18] HT.
- NUMERO DE CAVIDAD ALT. .156" [3.96]
CAVITY NUMBER .156" [3.96] HT.
- PUNTOS C.I.D. III SEGUN GS-217 DEBEN APARECER EN EL TALON COMO SE MUESTRA.
C.I.D. III DOTS PER GS-217 TO APPEAR ON THE HEEL AS SHOWN.

- LETRAS Y NUMEROS DEL TALON DEBEN APARECER COMO SE MUESTRA Y EN ESTILO PUNTA REDONDA, .006" [0.15] PROF. x .022" [0.56] ANCHO.
LETTERS & NUMBERS ON HEEL TO APPEAR AS SHOWN AROUND BOTTOM STYLE, .006" [0.15] DEPTH x .022" [0.56] WIDE.
- CRESCENTS N-9 DEBEN CUBRIR LA SUPERFICIE DE APOYO COMO SE MUESTRA.
N-9 CRESCENTS TO APPEAR ON BEARING SURFACE AS SHOWN.
- COLOR DE VIDRIO: FLINT/AMBAR
GLASS COLOR: FLINT/AMBER
- PROCESOS DE FABRICACION: BLOW & BLOW (ENHANCED) Y PRESS & BLOW (NNPB).
MANUFACTURING PROCESSES: BLOW & BLOW (ENHANCED) AND PRESS & BLOW (NNPB).



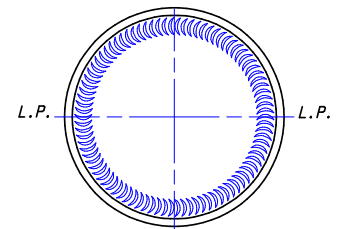
INFORMACION:
LA INFORMACION CONTENIDA EN ESTE DOCUMENTO CONSTITUYE INFORMACION CONFIDENCIAL PROPIEDAD DE VENEZOLANA DEL VIDRIO, C.A.
DEBE SER ACEPTADA SOLO CON ESE ENTENDIMIENTO Y DEBE SER MANTENIDA CONFIDENCIAL. NO DEBE SER COPIADA, UTILIZADA O REMITIDA A TERCEROS SIN LA AUTORIZACION ESCRITA DE VENEZOLANA DEL VIDRIO, C.A.

NOTICE:
INFORMATION CONTAINED HEREIN CONSTITUTES PROPRIETARY CONFIDENTIAL INFORMATION OF VENEZOLANA DEL VIDRIO, C.A.
AND IS TO BE ACCEPTED ONLY SUBJECT TO THAT UNDERSTANDING. IT IS TO BE KEPT CONFIDENTIAL AND NOT TO BE COPIED, USED OR CONVEYED TO OTHERS WITHOUT VENEZOLANA DEL VIDRIO, C.A. WRITTEN AUTHORIZATION.

**ADVERTENCIA
WARNING**

ESPECIFICACIONES SON TENTATIVAS PESO DEL VIDRIO, PTO. DE LLENADO Y DIMENSIONES FINALES SERAN ESTABLECIDAS EN LA PRIMERA PRODUCCION.

SPECIFICATIONS ARE TENTATIVE WEIGHT OF GLASS, PTO. FILLING FINAL DIMENSIONS WILL BE ESTABLISHED IN THE FIRST PRODUCTION.



APPROX. STABILITY PROPERTIES	
CENTER GRAVITY (mm)	86.43
BOTTLE STABILITY RATIO	0.59
TIP ANGLE (IN DEGREES)	16.50
DIAMETER BEARING (mm)	51.21

FINISH DETAIL
026-0540-R002

ESTE MOLDE ES EQUIVALENTE
AL GBV-2005.

PANEL DETAIL
SCALE 4 TO 1

N°	REVISION	DATE	INIT.	REV.

DRAWING: NRO. VE0684		MOLD N° : GBV-2176	
DATE: 03-NOV-2015	CLIENT: STOCK. EXPORTACION.		
SCALE: 1=1	DESCRIPTION: CERVEZA 12oz N/R		
DRAWING: YONATHAN P.	FULL CAPACITY: 378.00ml ± 5.55ml 12.810oz ± .188oz		
VERIFY:	CAPACITY: 355.00ml ± 5.55ml 12.004oz ± .188oz		
APPROVED:	WEIGHT: 215g ± 8.86g 7.583oz ± .313oz		
PROJECT: N°: REF. GBV-2175	DIMENSIONS IN MILLIMETERS SHOWN ()		

DEPARTAMENTO DE DISEÑO
Y ESPECIFICACIONES
LOS GUAYOS-EDO-CARABOBO

Venezolana del Vidrio

SI DURANTE TRES (03) AÑOS CONSECUTIVOS NO RECIBIMOS PEDIDOS DEL ENVASE ILUSTRADO EN ESTE DISEÑO, PROCEDEREMOS A LA DESTRUCCION DEL EQUIPO DE MOLDES.

IF FOR THREE (03) YEARS CONSECUTIVE NOT RECEIVE CONTAINER ORDERS ILLUSTRATED IN THIS DESIGN, WE PROCEED TO THE DESTRUCTION OF THE EQUIPMENT MOLDS.